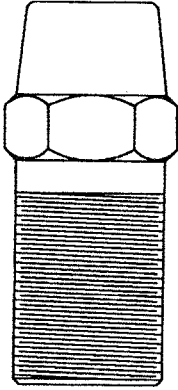


WIRE ROPE SLEEVES & ASSEMBLY KITS

Sleeve Selection Table



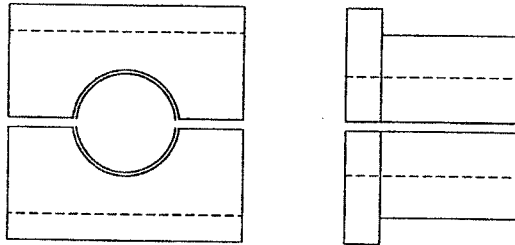
Sleeve Catalog Numbers

Rope Size	Self-Colored Steel	Zinc Plated Steel	Galvanized Steel	Bronze	Stainless Steel
1/16	ID-906-N	ID-906-V	ID-906-X	IZ-906	IS-906
3/32	ID-909-N	ID-909-V	ID-909-X	IZ-909	IS-909
1/8	ID-912-N	ID-912-V	ID-912-X	IZ-912	IS-912
5/32	ID-915-N	ID-915-V	ID-915-X	IZ-915	IS-915
3/16	ID-918-N	ID-918-V	ID-918-X	IZ-918	IS-918
7/32	ID-921-N	ID-921-V	ID-921-X	IZ-921	IS-921
1/4	ID-925-N	ID-925-V	ID-925-X	IZ-925	IS-925
9/32	ID-928-N	ID-928-V	ID-928-X	IZ-928	IS-928
5/16	ID-931-N	ID-931-V	ID-931-X	IZ-931	IS-931
3/8	ID-937-N	ID-937-V	ID-937-X	IZ-937	IS-937
7/16	ID-943-N	ID-943-V	ID-943-X	IZ-943	IS-943
1/2	ID-950-N	ID-950-V	ID-950-X	IZ-950	IS-950
9/16	ID-956-N	ID-956-V	ID-956-X	IZ-956	IS-956
5/8	ID-962-N	ID-962-V	ID-962-X	IZ-962	IS-962
3/4	ID-975-N	ID-975-V	ID-975-X	IZ-975	IS-975
7/8	ID-987-N	ID-987-V	ID-987-X	IZ-987	IS-987
1	ID-999-N	ID-999-V	ID-999-X	IZ-999	IS-999
1-1/8	ID-9112-N	ID-9112-V	ID-9112-X	IZ-9112	IS-9112
1-1/4	ID-9125-N	ID-9125-V	ID-9125-X	IZ-9125	IS-9125
1-3/8	ID-9137-N	ID-9137-V	ID-9137-X	IZ-9137	IS-9137
1-1/2	ID-9150-N	ID-9150-V	ID-9150-X	IZ-9150	IS-9150

TUBE DRIVER



ASSEMBLY BLOCK



HOLE DIAMETER IS 1/32 SMALLER THAN CABLE DIAMETER.

For easier, more efficient assembly of Electroline Wire Rope Fittings, it is suggested that assembly kits be used.

The assembly blocks prevent the wires of the rope strands from being nicked by the jaws of the vise, protect the lay of the strand, and hold all of the wires in the strand firmly so that the plug can be driven to a solid seat.

Assembly kits, as illustrated here, are available in many sizes. For ordering information, see chart.

Assembly Kits for Individual Wire Rope

Rope Size	Kit #	Component Parts	
		Vise Jaws	Tube Driver
1/16 - 3/32	SP-307-D	SP307-1D	SP307-2AA
1/8 - 5/32	SP-307-E	SP307-1E	SP307-2A
3/16 - 7/32	SP-307-E	SP307-1E	SP307-2A
1/4 - 9/32	SP-307-G	SP307-1F	SP307-2A
5/16	SP-307-H	SP307-1F	SP307-2B
3/8	SP-307-J	SP307-1G	SP307-2B
7/16	SP-307-K	SP307-1G	SP307-2C
1/2	SP-307-L	SP307-1H	SP307-2C
9/16	SP-307-L	SP307-1H	SP307-2C
5/8	SP-307-N	SP307-1J	SP307-2D
3/4	SP-307-P	SP307-1K	SP307-2D
7/8	SP-307-Q	SP307-1L	SP307-2E
1	SP-307-R	SP307-1M	SP307-2E
1-1/8	SP-307-S	SP307-1N	SP307-2F
1-1/4	SP-307-T	SP307-1P	SP307-2F
1-3/8	SP-307-V	SP307-1Q	SP307-2G
1-1/2	SP-307-W	SP307-1R	SP307-2G